

# Aqua Lawn INC.

## SPRINKLER SYSTEMS

Email: office@aqualawninc.com Phone: 509-334-1745 Website: www.aqualawninc.com



### SPRING IS RIGHT AROUND THE CORNER!

This is your spring startup service reminder! Don't forget to read the back page for information regarding the upcoming startup Service of your Sprinkler System!



### A NEW FACE IN OUR OFFICE

We are in the process of adding a new office assistant. Please help us welcome our new addition & be patient as we transition through the hiring and training process!



### POISON HEMLOCK

Poison Hemlock is an acutely toxic noxious weed found throughout the nation (inc. WA and ID) that can kill humans and animals if ingested. Be on the lookout for this invasive weed in your yard, on roadsides, near ditches & other sources of water!! It has a tall, green & purple stalk reaching up to 12ft in one season and blooms in May & June with white umbrella like clusters.

Call poison control or a vet clinic immediately if you suspect a child or pet has ingested or touched any crushed part of the plant.

Find out more at:  
<https://invasivespecies.wa.gov/priorityspecies/poison-hemlock/>

#### Conserving Water At Home

10 ways to reduce your consumption, lower your bill, and help the environment

- Upgrade Your Appliances** (Icons: Dishwasher, Washing Machine, Toilet)
- Turn Off The Tap** (Icon: Running Faucet) For every minute that a faucet runs two gallons of water are used.
- Water Your Lawn Right** (Icon: Sun) Water during sunrise or sunset to avoid losing water to evaporation.
- Cut Your Grass Effectively** (Icon: Grass) Keep your grass height at 2 inches to give it shade and help it retain moisture.
- Use Grey Water** (Icon: Water Drop) Grey water is relatively clean, used water from your bathroom sinks, showers, washing machine, & other appliances. It can be reused to water plants and gardens.
- Use your dishwasher wisely** (Icon: Dishwasher) New dishwasher models use less water than hand washing and clean more thoroughly let you skip a pre-wash!
- Compost** (Icon: Compost Bin) Garage disposals use a lot of water and they also add a considerable amount of solids to your septic tank. Compost instead!
- Check For Leaks** (Icon: Leaking Pipe) A faucet leaking at one drip per second can waste 3,000 gallons a year.
- Take Shorter Showers** (Icon: Showerhead)
- Reuse and Re-wear** (Icon: Laundry) Save water on laundry loads by re-wearing lightly worn clothes.

### WATER SAVING IDEAS FOR YOUR SPRINKLER SYSTEM

- **Smart Controllers:** Self-Adjusting (set & forget)
- **Auto Shutoff Devices**
  - Rain Sensors
  - Soil-Moisture Sensors
- **Pressure Regulated Spray Heads:** Save 1+ gallon/min in high water pressure areas. (over 50 psi)
- **Seal-a-matic Heads:** Save water by eliminating low-head drainage.
- **Drip Irrigation:** Most efficient way to water plants; delivers water directly to roots of desired plants.
- **Avoid Over-Watering**
  - **Adjust your timer seasonally!**
  - **Let lawn dry out btwn waterings:** Step test: if grass springs back in your footprint wait to water.
  - **Water in early morning hours: (3am-5am)** Instead of the heat of the day for best water efficiency.
  - **Water Deeply:** By watering less frequently but for longer duration water permeates farther into the soil encouraging a deep root system and a hardier more drought resistant lawn.



### WAYS TO IMPROVE DRAINAGE & RESIDUAL WATER PROBLEMS

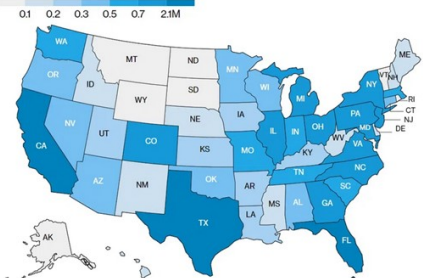
- Thatch & Aerate
- Top-dress lawn with a mixture of compost & sand.
- Plant plants that thrive in constantly moist climates.
- Install Yard Drains, French Drains, Rain Gardens or Dry Creek Beds.
- Contact us for an estimate on any drainage projects that you are interested in!

### ALL ELECTRIC MOWING & TRIMMING SERVICES

Residential homes in the US use about 600 million gallons of fossil fuels each year on lawn maintenance

**Electric mowing is virtually noise-free & eliminates greenhouse gas emissions!**

CO<sub>2</sub> Emissions from Lawn & Garden Equipment  
 Lawn tools emitted more than 30 million tons of carbon dioxide in 2020.



Source: US Environmental Protection Agency; Report by Frontier Group, Environment Texas Research & Policy Center and CoPIRG Foundation

We're committed to helping our customers reduce their carbon footprint. **Mowing services are currently offered in Pullman, Moscow, Colfax** and any surrounding communities with at least 5+ sign-ups per season. If you are interested in weekly mowing, to get signed up, or to find out if your community has logged enough sign-ups to add the service, please contact us.

Products

# Fertilizer

We are proud to offer quality Planet Turf Fertilizer products with the best formulated fertilizers for each season, reducing confusion and hassle by guaranteeing your lawn is getting the right amount of nutrients at the right time. Planet Turf fertilizers contain a slow-release Nitrogen compound that continues to nourish your lawn for up to 8 weeks after application. We also use a broadleaf herbicide to "spot-spray" weeds during our fertilizer application process ensuring your lawn will be weed-free & healthy year round!

We use only slow-release Nitrogen fertilizers, recognized for their environmental friendliness! This type of fertilizer keeps the Nitrogen compound at the soil level while continuing to nourish your lawn for up to 8 weeks after application, instead of flushing off into ground water as regular fertilizers do. We also choose not to formulate our fertilizers with unnecessary Phosphorus (P) due to its negative effect on aquatic ecosystems & water quality.

**Premium Spring & Fall Fertilizer: 22-0-10** will give good early response and encourages deeper root growth.

**Quality High N Summer Fertilizer: 33-0-4** Fertilizing your lawn during warm summer months enhances the turf strength to better utilize water and resist disease.

**Note:** Slow-release fertilizers reduce nutrient loss, improve water efficiency & decrease irrigation frequency needs!  
(courtesy: www.scientificamerican.com)

## Application or Drop-Off Service

**APPLICATION PRICE RANGE:** 1,500-5,000 sq. ft. \$75-\$125/App. (Prices vary depending on size & topography of yard)

3 Applications: Spring, Summer, Fall (Memorial Day, 4th of July, Labor Day)

★ ★ Select our **CONTINUOUS** Fertilizer List to be included in your choice of services (application or delivery) each year until further notice. ★ ★

**DROP OFF PRICE GUIDE :**  
Fertilizer: 50lb bag.....\$ 57.00

**DELIVERY FEE SCHEDULE:**  
\$8 in-town (Pullman/Moscow)  
\$10 out-of-town (15 mi. radius)  
\$15 (15+ mi. radius of Pullman/Moscow)



# Hydroseeding

## Lawn Mix

Aqua Lawn's Lawn Mix is a specially formulated grass seed blend produced especially for our region's climate and soil type. This blend is recommended for areas you plan to water, mow and maintain, and with the right care and maintenance will provide a lush lawn within weeks of application.



## Erosion Control

For non-mowing areas we also offer a Native Prairie-grass blend to prevent erosion on steep slopes and newly disturbed soil areas. It is also great to use on roadways, terraced slopes, transitional areas, or natural areas.



## Wildflowers

Wildflowers are the vegetation answer to many area that cannot be maintained with a mower. They hold soil on erosion susceptible hillsides, help lower fire hazard and attract birds, butterflies, and preferable insects to your yard & garden. Wildflowers can be blended with a mix of spring, summer & fall blooming varieties of annuals, perennials or both. They can be sown alone or with grasses, & can be specially blended to fit your particular color palate.

## Other Seed Blends

- Shrub & Tree Mixes
- Pasture & Hay Mixes
- Watershed Restoration
- Wildlife Mix/Nesting Mix: animal & game bird habitat
- Forage Mixes: attract deer & elk

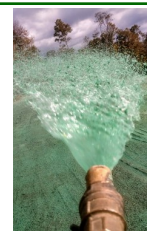


- Yard/Dirt Preparation
- Compost Delivery
- Lawn Renovations
- Top Soil
- Tilling
- Soil Stabilization
- Sod Removal
- Sod Installation

**H**ydroseeding is a process by which seed, mulch, water and tackifiers are mixed into a "slurry" and sprayed onto the soil. The mulch and tackifiers help the mix adhere to the soil surface allowing the seed time to take root and prevent the mix and soil from washing away.

## Our Guarantee:

**Hydroseeding Guarantee:** Our guarantee includes re-seeding areas of low germination and areas washed out by a normal rain. We cannot guarantee against "acts of nature:" floods, fires, insects, animals, fungi or bacterial diseases. We cannot guarantee germination after October 1st, however we will work with you in special situations. We will not guarantee any poor results from lack of water or fertilization. We supply the seed, but it is up to your care and maintenance to ensure it's growth. Ask for our extended care package if you would like us to take care of the first three fertilizer applications & up to three broad-leaf herbicide sprays to ensure those occur at the correct intervals.





# Landscape Installation & Maintenance

## Landscaping

- Landscape Design & Installation
- Plant Design/Installation
- Concrete Curbing/Vinyl Edging Install
- Planting Beds, Raised Beds
- Garden Areas, Garden Boxes
- Beauty Bark & Landscape Fabric
- Decorative Rock & Fabric
- Small Water Features
- Xerigation/Drought Tolerant Landscapes
- Landscape Lighting



## Hardscapes

- Pathways & Patios: Flagstone, Cobblestone, Brick, Pavers, Stairs
- Basalt Columns, Boulder Placement
- Water Features, Fountain Rocks, Column Drilling, Firepits
- Retaining Walls: Rock/Block, Keystone, Natural Stone, Wood, Timbers, RR Ties
- Concrete Curbing/Edging



## Lawn Maintenance

- Dethatching
- Aeration
- Spring Clean & Yard Beautification
- Fall Yard Cleanout/Rake & Removal
- Fertilizer Application
- Broadleaf Weed Control, Thistle Spray (pastures/acreage), Pre-Emergent
- Yard Renovations
- Moss Control/Removal



### Best time of year to:

- **Aerate:** Spring or Early Summer
- **Thatch:** March-June
- **Fertilize:** Spring, Summer, & Fall
- **Mow:** Weekly during growing season (Don't cut off more than 1/3 of growth)
- **Water:** 1" per week during growing season (Early morning hours 3am-5am)



## Ask About Our:

- Efficiency upgrades
- Smart Controllers: Weather-Based Data Systems "Self Adjusting"
- Soil Moisture Sensors, Rain Sensors
- Pressure Regulated Sprinklers: to avoid water loss
- Backflow Testing (WA & ID Cert.)

## Sprinkler Maintenance

**Spring Startup:** Approximate Dates: Mid-March—Early May

- Turn on water main & Correctly charge backflow device
- **Manually** cycle through system, checking for obvious broken and severely misaligned sprinkler heads and other noticeable damages, which will be repaired at that time.
- **NOTE:** Many underground leaks do not surface for several days. please keep an eye out for puddles in or around your yard after initial startup or first use.

**Winterization:** Late Sept.– Early Nov.

- Shut-off water main
- Properly winterize double-check valve
- Blow-out water from underground pipes using a high-pressure continuous-flow air compressor

**Backflow Testing:** WA & ID Certified (see details on back)

- Package deal @ Startup or regular price later in season

**Repair Services:** Full-time repair crew

- Servicing all brands of irrigation products
- Using only Rain Bird products for replacement/repair
- Can assess your system for upgrade or efficiency recommendations during a service call

**Repair Service Call Rates:**

- "In-Town" Moscow/Pullman: \$65/hr+ parts
- 15 mile radius of Moscow/Pullman: \$75/hr+ parts

### Annual Automatic Services:

For your convenience, our sprinkler services are set up to recur automatically each season. Blow-outs recur annually each fall for all customers. You may also choose to be setup as "All Services" including spring & fall services every year until further notice. **Don't forget to cancel if moving!**

- 15+ mile radius of M/P: \$80/hr+ parts
- 25+ miles radius of M/P: \$100 initial visit then \$80/hr additional hr+ parts





**Aqua Lawn Irrigation Staff:** Our staff is friendly, professional, and highly trained in the areas of Irrigation design, installation, and maintenance. **Brandon Briggs, President of Aqua Lawn, Inc. is a proud EPA Water Sense Partner, is Certified by the Irrigation Assoc. as a Certified Landscape Irrigation Auditor (CLIA), and is a Rain Bird Select Contractor.** He designs and installs the most efficient sprinkler systems to date, and can also provide you with simple solutions to make your existing irrigation system more efficient. Call to schedule a "water-audit" consultation for an existing system or a free estimate appointment for a new design and installation with Brandon today!

- Emergency: After hours/night/wknd/off-season: \$200/visit + \$200/additional hour + parts



PO Box 429  
Pullman, WA 99163

Return Service Requested

PRSR STD  
U.S. POSTAGE  
PAID  
COLTON, WA  
PERMIT NO. 4



- ✂
- Yes, please test my DCVA this spring along with the Startup at the Early-Bird Package Rate
  - Yes, please only test my DCVA this spring, I will turn on my own system. (\$70/test)
  - Yes, please sign me up to be on the automatic list for DCVA Test ANNUALLY each spring.
  - Address or Customer Changes: (check if apply)  
Please update this account with the following:  
Customer Name: \_\_\_\_\_  
Billing Address: \_\_\_\_\_  
Billing Email \_\_\_\_\_

✂

**ATTENTION AQUA-LAWN CUSTOMER LISTED ABOVE:**  
PLEASE READ BELOW FOR IMPORTANT INFORMATION ABOUT THE UPCOMING 2025 SPRING STARTUP SERVICES FOR YOUR IRRIGATION SYSTEM!



**2025 Spring Startup Services Offered**

We noticed that you have not signed up for a spring startup this year. Please let us know if you would like to be on our automatic startup list. We will begin turning on systems mid-March, continuing through April, until early-May. You do not need to begin watering at the time we activate your system, but it will be ready for you whenever you would like to turn on your controller. The cost of the spring startup is time dependent, but is usually around \$40.00 and includes turning on your main, correctly charging your backflow device, and properly cycling through the system to check for obvious broken sprinkler heads, severely misaligned sprinklers, or other noticeable damages which will be fixed at that time. If there are extensive repairs that are needed we will note them on the invoice and ask that you contact us to request the work be completed at a later time. Fine-tuning adjustments, or major repair requests will not be addressed during the startup, but will be attended to upon request for a future visit. If you would like us to add you to our spring list please contact us by email at office@aqualawninc.com or by phone at the above listed number **no later than April 15th**. Thank you for your business!

**\*\*NOTE: All green irrigation lids in your yard need to be accessible prior to our visits\*\***

**Attention City Water Residents...**  
**If you live within the city limits this may apply to you!**

Most City Water Depts. in WA & ID are now enforcing a code requiring every sprinkler system to have a backflow prevention device (DCVA) which must be tested by a Certified Assembly Tester on an annual basis to ensure no irrigation water flows back into the city's potable water supply. All Aqua Lawn installed systems have a DCVA or other applicable backflow prevention device located near the water meter. To help with the added costs associated w/this code we are offering an **Early-Bird Startup Package** to our loyal customers.

**The regular cost of this test is \$70, however we offer a package deal each spring with our startup services. Our current startup base fee is \$40. We will package both services together for \$85-95 depending on your area. (If requested before April 15th)\* Additional fees will apply if repair needs are found. If the device does not pass the initial test it will be flushed & retested costing an additional \$20. NOTE: The backflow test may be completed at a separate visit, but you will still receive the package price as advertised!**

For questions about the city requirement please contact your city water department directly.

If interested in the Early Bird Special please contact us using one of the following options: 1) **Email** us: office@aqualawninc.com (subject line: DCVA Test Pkg). OR 2) **Clip** off name & address box above & submit by mail to PO Box 429, Pullman, WA 99163.

3) To be included in an **Automatic ANNUAL DCVA test list**, and avoid the hassle of signing up each year, email using the word Continuous, or check "Yes" boxes 1&3 above & mail it back to us. We will get your account up to date immediately and will test each spring w/ startup at the discounted package rate.

\*We will submit the required paperwork to your city so that you are in compliance with this code. If you would like a copy of the test results simply email us your request & we will email you a copy when the test has been completed.